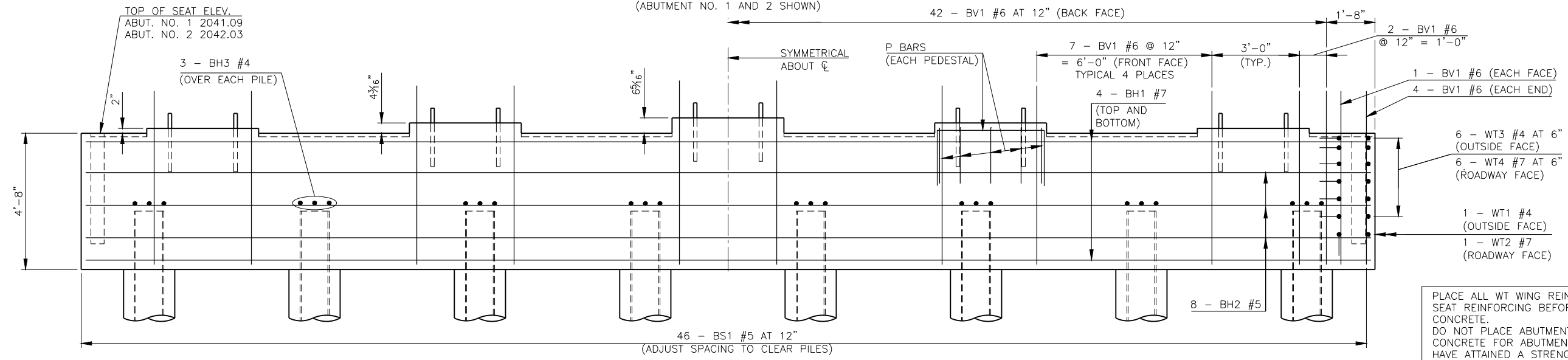
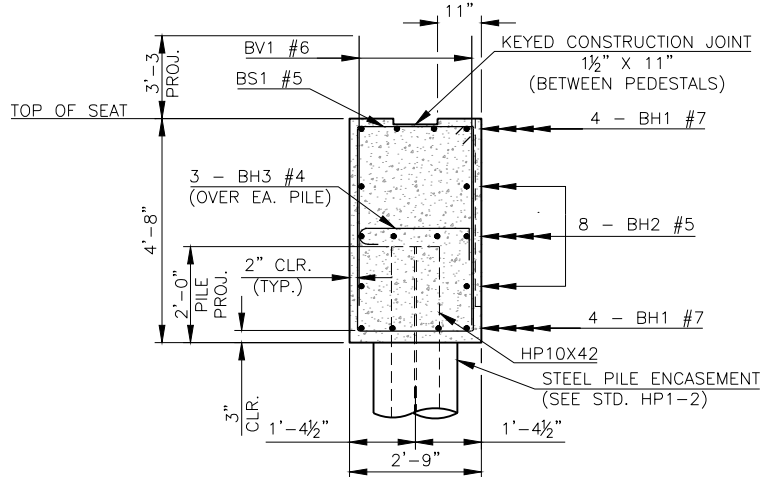


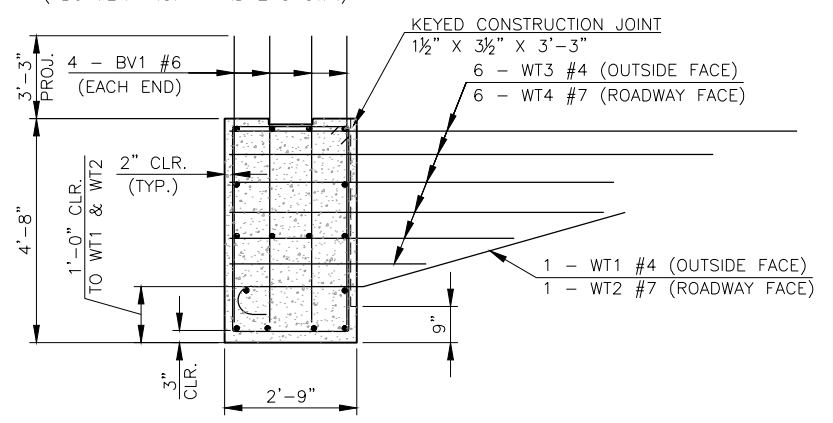
ABUTMENT PLAN
 (ABUTMENT NO. 1 AND 2 SHOWN)



ABUTMENT ELEVATION
 (ABUTMENT NO. 1 AND 2 SHOWN)



SECTION THRU ABUTMENT SEAT



SECTION A-A

PLACE ALL WT WING REINFORCING TIED TO ABUTMENT SEAT REINFORCING BEFORE PLACING ABUTMENT SEAT CONCRETE.
 DO NOT PLACE ABUTMENT WING CONCRETE UNTIL CONCRETE FOR ABUTMENT DIAPHRAGM AND DECK SLAB HAVE ATTAINED A STRENGTH OF 3,000 P.S.I.

- NOTE:
FOR WING DETAILS, BAR BENDS AND BAR LIST, SEE SHEET 27.
- NOTE:
FOR EXTENT OF WATER REPELLENT TREATMENT, SEE SHEET 32.
- NOTE:
FOR ABUTMENT DIAPHRAGM DETAILS, SEE SHEETS 38 AND 39.
- NOTE:
FOR SUBSTRUCTURE EXCAVATION AND PIPE UNDERDRAIN DETAIL, SEE STD. B40-I-ABUT-MISC.

ABUTMENT QUANTITIES				
ITEM	UNIT	ABUT. NO. 1	ABUT. NO. 2	TOTAL
SUBSTRUCTURE EXCAVATION COMMON	C.Y.	45	45	90
CLSM BACKFILL	C.Y.	100	100	200
CLASS A CONCRETE	C.Y.	29.8	29.8	59.6
EPOXY COATED REINFORCING STEEL	LB.	4,720	4,720	9,440
PILES, FURNISHED (HP10X42)	LF.	440	872	1,312
PILES, DRIVEN (HP10X42)	LF.	440	872	1,312
WATER REPELLENT (VISUALLY INSPECTED)	S.Y.	17	17	34
TYPE I-A PLAIN RIPRAP	TON	604	854	1,458
TYPE I-A FILTER BLANKET	TON	136	191	327
6" PERFORATED PIPE UNDERDRAIN ROUND	LF.	42	42	84
6" NON-PERF. PIPE UNDERDRAIN RND.	LF.	15	15	30

DESIGN	J.W.H.	SH34 OVER S. PERSIMMON CREEK	WOODWARD COUNTY
DRAWN	R.A.P.	BRIDGE A	
CHECKED	J.W.H.		
APPROV.	T.A.C.		
SQUAD	CEC		

ABUTMENT DETAILS

JOB PIECE NO. 28825(04) SHEET NO. 26